



Jeep Compass
Standard Safety Equipment

2017



Adult Occupant



Child Occupant



Pedestrian Impact Protection



Safety Assist



SPECIFICATION

Tested Model	Jeep Compass 4 x 4 Limited, 2.0, LHD
Body Type	- 5 door SUV
Year Of Publication	2017
Kerb Weight	1575kg
VIN From Which Rating Applies	- all Compass variants
Class	Small Off-Road

SAFETY EQUIPMENT

	Driver	Passenger	Rear
FRONTAL CRASH PROTECTION			
Frontal airbag	●	●	✘
Belt pretensioner	●	●	●
Belt loadlimiter	●	●	●
Knee airbag	✘	✘	✘
SIDE CRASH PROTECTION			
Side head airbag	●	●	●
Side chest airbag	●	●	✘
Side pelvis airbag	✘	✘	✘

SAFETY EQUIPMENT (NEXT)

	Driver	Passenger	Rear
CHILD PROTECTION			
Isofix	—	✗	●
Integrated CRS	—	✗	✗
Airbag cut-off switch	—	●	—
SAFETY ASSIST			
Seat Belt Reminder	●	●	✗

OTHER SYSTEMS	
Active Bonnet (Hood)	✗
AEB Pedestrian	✗
AEB City	●
AEB Inter-Urban	●
Speed Assistance System	●
Lane Assist System	●

Note: Other equipment may be available on the vehicle but was not considered in the test year.

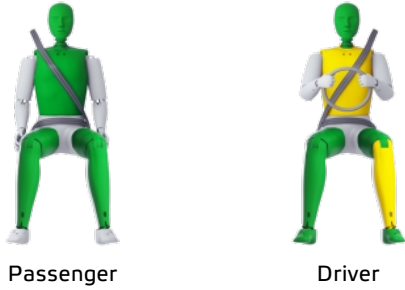
- Fitted to the vehicle as standard ○ Fitted to the vehicle as part of the safety pack
- Not fitted to the test vehicle but available as option or as part of the safety pack ✗ Not available — Not applicable

 ADULT OCCUPANT

Total 34.5 Pts / 90%

■ GOOD
 ■ ADEQUATE
 ■ MARGINAL
 ■ WEAK
 ■ POOR

Frontal Offset Deformable Barrier 7.5 Pts



Passenger

Driver

Frontal Full Width 7.6 Pts



Rear Passenger

Driver

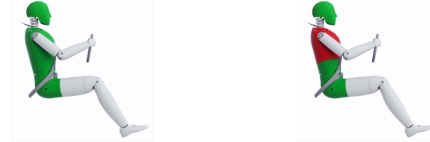
Whiplash Rear Impact 2.7 Pts



Front seat

Rear seat

Lateral Impact 14 Pts



Car

Pole

AEB City 2.8

Performance: ■ Good



ADULT OCCUPANT

Total 34.5 Pts / 90%



GOOD



ADEQUATE



MARGINAL



WEAK



POOR

 ADULT OCCUPANT

Total 34.5 Pts / 90%

Comments

The passenger compartment remained stable in the frontal offset test. Dummy readings indicated good protection of the knees and femurs of both the driver and passenger. Jeep showed that a similar level of protection would be provided to occupants of different sizes and to those sat in different positions. Protection of the front passenger was good for all critical body areas. In the full-width rigid-barrier test, protection of the driver was good. Chest protection for the rear passenger was rated as marginal, based on dummy readings of chest compression, but that of other parts of the body was good or adequate. In the side barrier test, protection of all critical body areas was good and full points were scored. However, in the more severe side pole impact, protection of the chest was rated as poor, based on high rib compressions, although these remained lower than the values at which the risk of fatal injuries becomes unacceptably high. Tests on the front seats and head restraints demonstrated good protection against whiplash injury in the event of a rear-end collision. A geometric assessment of the rear seats also indicated good whiplash protection for occupants sat there. The Compass has a standard-fit autonomous emergency braking system. Tests of its performance at the low speeds at which whiplash injuries are often caused showed good performance with collisions avoided or mitigated at all test speeds.

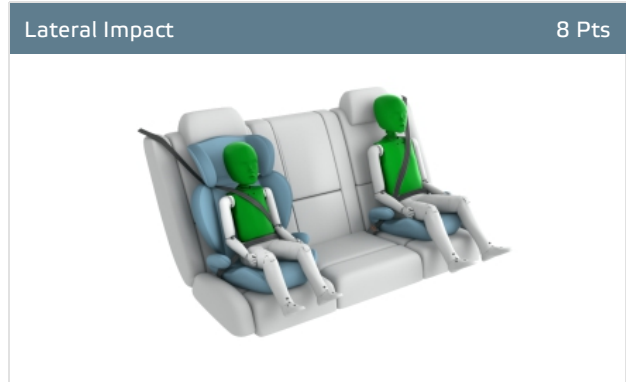
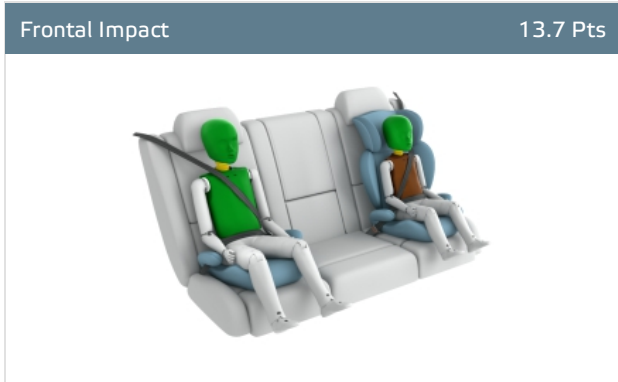
CHILD OCCUPANT

Total 40.7 Pts / 83%

GOOD ADEQUATE MARGINAL WEAK POOR

Crash Test Performance based on 6 & 10 year old children

21.7 Pts



Restraint for 6 year old child: *Britax Römer KidFix XP*

Restraint for 10 year old child: *Graco Maxi Junior*

Safety Features

7 Pts

	Front Passenger	2nd row outboard	2nd row center
Isofix	✗	●	✗
i-Size	✗	●	✗
Integrated CRS	✗	✗	✗

● Fitted to test car as standard ○ Not on test car but available as option ✗ Not available


CRS Installation Check

12 Pts

● Install without problem ● Install with care ● Safety critical problem ✗ Installation not allowed

i-Size CRS



 CHILD OCCUPANT

Total 40.7 Pts / 83%

■ ISOFIX CRS

Maxi Cosi Cabriofix & FamilyFix (ISOFIX)



BeSafe iZi Kid X4 ISOFix (ISOFIX)



Britax Römer Duo Plus (ISOFIX)



Britax Römer KidFix XP (ISOFIX)



■ Universal Belted CRS

Maxi Cosi Cabriofix (Belt)



Maxi Cosi Cabriofix & EasyBase2 (Belt)



Britax Römer King II LS (Belt)



Britax Römer KidFix XP (Belt)



CHILD OCCUPANT

Total 40.7 Pts / 83%

	Seat Position			
	Front	2nd row		
	PASSENGER	LEFT	CENTER	RIGHT
Maxi Cosi 2way Pearl & 2wayFix (rearward) (iSize)	□	●	□	●
Maxi Cosi 2way Pearl & 2wayFix (forward) (iSize)	□	●	□	●
BeSafe iZi Kid X2 i-Size (iSize)	□	●	□	●
Maxi Cosi Cabriofix & FamilyFix (ISOFIX)	□	●	□	●
BeSafe iZi Kid X4 ISOfix (ISOFIX)	□	●	□	●
Britax Römer Duo Plus (ISOFIX)	□	●	□	●
Britax Römer KidFix XP (ISOFIX)	□	●	□	●
Maxi Cosi Cabriofix (Belt)	●	●	●	●
Maxi Cosi Cabriofix & EasyBase2 (Belt)	●	●	●	●
Britax Römer King II LS (Belt)	●	●	●	●
Britax Römer KidFix XP (Belt)	●	●	●	●

● Install without problem
 ● Install with care
 ● Safety critical problem
 ✘ Installation not allowed

Comments

In the frontal offset test, protection of both child dummies was rated as good or adequate with the exception of the chest of the 6 year dummy, for which dummy readings of deceleration indicated a weak level of protection. In the side barrier test, protection of both dummies was rated as good. The front passenger airbag can be disabled to allow a rearward-facing child restraint to be used in that seating position. Clear information is provided to the driver regarding the status of the airbag and the system was rewarded. All of the restraint types for which the Compass is designed could be properly installed and accommodated.



PEDESTRIAN IMPACT PROTECTION

Total 27.3 Pts / 64%

■ GOOD
 ■ ADEQUATE
 ■ MARGINAL
 ■ WEAK
 ■ POOR

Pedestrian Impact Protection 27.3 Pts



Head Impact	15.3 Pts
Pelvis Impact	6 Pts
Leg Impact	6 Pts

AEB Pedestrian 0 Pts

Comments

The bonnet provided predominantly good or adequate protection to the head of a struck pedestrian. The bumper provided good protection to pedestrians' legs and the pelvis was well protected by front end of the car. The autonomous emergency braking system does not have pedestrian-detecting functionality.

SAFETY ASSIST

Total 7.1 Pts / 59%

■ GOOD
 ■ ADEQUATE
 ■ MARGINAL
 ■ WEAK
 ■ POOR

Speed Assistance

1.5 Pts

System Name	Active Speed Limiter
Speed Limit Information Function	N/A
Warning Function	Manually set
Speed Limitation Function	Manually set (accurate to 5km/h)

Seat Belt Reminder

2 Pts

Applies To	Front seats		
	Driver Seat	front passenger(s)	rear passenger(s)
Warning			
Visual	●	●	—
Audible	●	●	—

● Pass
 ● Fail
 — Not available

Lane Support

1.2 Pts


System Name	LaneSense Lane Departure
Type	Lane Keep Assist
Operational From	60 km/h
Warning	Visual
PERFORMANCE	
LKA Confirmation Test	Pass (5/5)

 SAFETY ASSIST

Total 7.1 Pts / 59%

AEB Interurban

2.4 Pts

System Name	Forward Collision Warning Plus	
Type	Forward Collision Warning with Auto-Brake	
Operational From	10 km/h	
Additional Information	Default On; Supplementary Warning	
PERFORMANCE 		
	Autobrake Function Only	Driver reacts to warning
Operational Speed	10-200 km/h	30-200 km/h
Approaching a stationary car	See AEB City	Crash avoided up to 40km/h. Crash speed reduced up to 80km/h.
Approaching a slower moving car	Crash avoided up to 70km/h.	Crash avoided up to 80km/h.
FOLLOWING A CAR AT SHORT DISTANCE		
Car in front brakes gently	Mitigation	Avoidance
Car in front brakes harshly	Mitigation	Mitigation
FOLLOWING A CAR AT LONG DISTANCE		
Car in front brakes gently	Mitigation	Avoidance
Car in front brakes harshly	Mitigation	Avoidance

Comments

The Compass has a seatbelt reminder for the front seats only. The autonomous emergency braking system performed well in tests at highway speeds, with collisions largely avoided or mitigated. A driver-set speed limitation device is standard, as is a lane departure warning system.

RATING VALIDITY

Variants of Model Range

Body Type	Engine & Transmission	Model Name/Code	Drivetrain	Rating Applies	
				LHD	RHD
5 door SUV	1.4 MultiAir 140cv	1.4 MultiAir 140hp FWD 'Sport', 'Longitude' and 'Limited'	4 x 2	✓	✓
5 door SUV	1.6 MultiJet 120cv	1.6 MultiJet 120hp FWD 'Sport', 'Longitude' and 'Limited'	4 x 2	✓	✓
5 door SUV	1.4 MultiAir 170cv	1.4 MultiAir 170hp 4WD AUTO Limited	4 x 4	✓	✓
5 door SUV	2.0 MultiJet 140cv	2.0 MultiJet 140hp 4WD 'Longitude' and 'Limited*', including AUTO versions	4 x 4	✓	✓
				✓	✓

Euro NCAP © Jeep Compass Sept 2017 12/12

Body Type	Engine & Transmission	Model Name/Code	Drivetrain	Rating	Applies
door SUV	170cv	MultiJet 170hp 4WD AUTO 'Trailhawk' and 'Limited'			

* Tested variant

Annual Reviews and Facelifts

Date	Event	Outcome
September 2017	Rating Published	2017 ★★★★★ 